



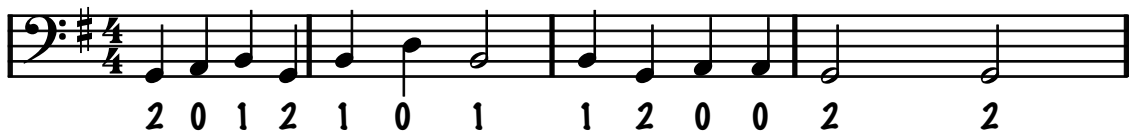
Track 28 & 29 on the CD

Two Finger Rhapsody

This piece uses 1st finger on D & A string and 2nd finger on E. Look at the pictures on the previous page to see where the fingers go.

SAMPLE

Note that the F# is not written in the music anymore but appears at the beginning of each staff. This is called a "key signature" and it looks much tidier.



SAMPLE