

Tones, Semitones & Scales

Key Signatures

Instead of having to place sharps or flats in front of notes, we can place the required sharps or flats at the beginning of a piece of music and those sharps or flats apply for the rest of the piece. If there is for example, an F# such as in G Major, then ALL F's - on the bottom space or the top line, are raised by a semitone. Semitones are marked with brackets.

C Major Scale has no sharps or flats.



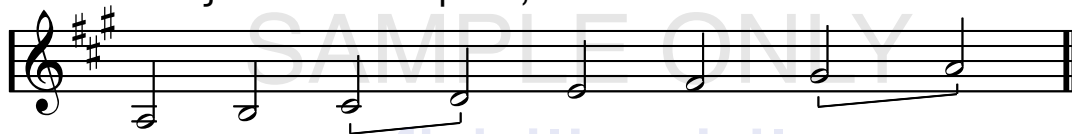
G Major has 1 sharp: F



D Major has 2 sharps: F & C



A Major has 3 sharps: F, C & G



F Major has 1 flat: B



This page may be copied & given to students for classwork or homework